

JANUARY ~ MARCH 2018
WWW.CHRISTIESREALESTATE.COM

CHRISTIE'S

INTERNATIONAL REAL ESTATE



THE GOURMET & ENTERTAINING ISSUE

ON THE COVER

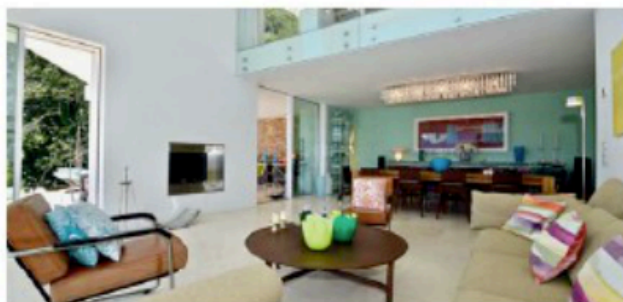
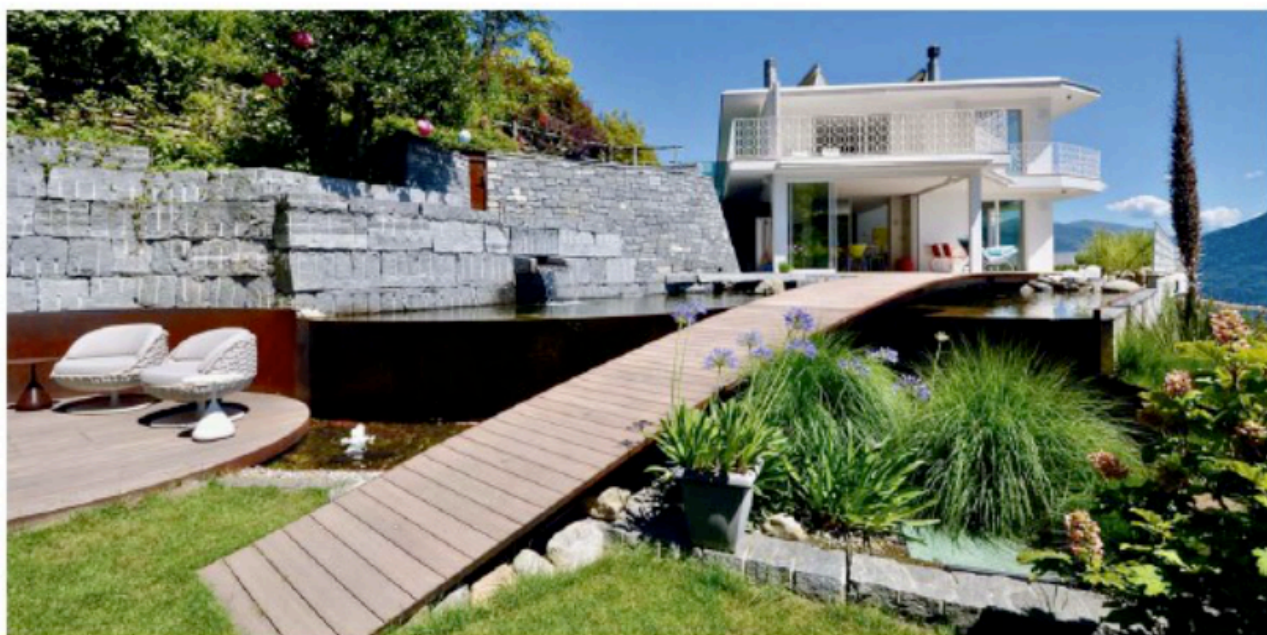
PENTHOUSE PERFECTION: HONOLULU'S DIAMOND HEAD VIEW

INSIDE

Growth industry—the rise of the domestic greenhouse

Feasts for the eyes—artists inspired by all things edible

More than 150 outstanding properties from around the world



LAKESIDE PERFECTION

BRIONE SOPRA MINUSIO, TICINO

- Breathtaking lake views
- Pools and private woods
- Eco-friendly construction and technology

Built into the hillside, this bright, contemporary 2012 villa boasts sublime 180-degree views of Locarno, Ascona, and Lake Maggiore. The spectacular 5,382 sq ft home is set over five floors, with five bedrooms and six baths. Ecologically conscious construction and technology, as well as tranquility and proximity to nature, are key

to the estate, which covers nearly two acres. Enormous floor-to-ceiling windows, with direct access to the terrace, make the most of the bucolic surroundings and sensational water vistas. Spacious living areas are characterized by a sleek 1960s aesthetic and state-of-the-art technology. A double-height living and dining area offers space for entertaining, while a covered pool area blends seamlessly with park-like gardens that border private woods. This retreat comes complete with garaging for four cars, an elevator, and a separate apartment for staff or guests, making it the perfect spot from which to enjoy the beauty of Brione sopra Minusio.

OFFERED AT CHF 6,350,000
INQUIRIES **Wetag Consulting**
Immobiliare SA, www.wetag.ch
ASSOCIATE **Alexander-David Iradj**,
alexander@wetag.ch, +41 91 751 3106
ON THE WEB Search for C58642